

For further information
please contact:



ControlPharma
Domino IS Group
Bar Hill
Cambridge
UK CB23 8TU
Tel: +44 (0)1954 782551
control.pharma@domino-uk.com
www.controlsoftware.net

About Control

Control, part of the Domino Group, is a specialist production, processing and packaging software company based in Germany with sales and support capability development in the USA, UK and France.

Domino Worldwide

Founded in 1978 and headquartered in Cambridge, UK, Domino Printing Sciences plc is a world-leader in providing total coding, marking, printing, traceability and RFID solutions. Through constant product development and acquisition, Domino now offers complete end to end solutions incorporating primary, secondary and tertiary applications. The company has established a global reputation for innovative ink jet, laser, print & apply and thermal transfer overprinting technologies for the application of variable data, bar codes and unique traceability codes onto products and packaging in industries such as food, beverage, construction and pharmaceutical.

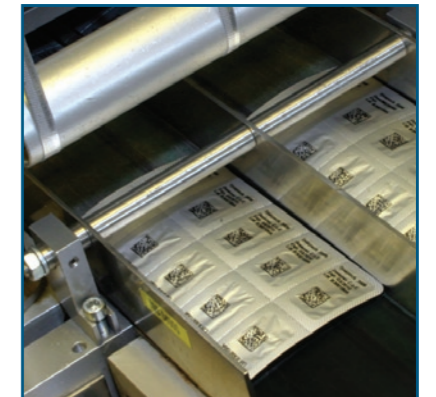
In 2007 Domino had a turnover in excess of £235M. It employs 2,100 people worldwide and sells to more than 120 countries through a global network of 17 subsidiary offices and more than 75 distributors. Domino's manufacturing facilities are situated in China, Germany, India, UK and USA.



Software Solution to Meet Pharmaceutical Serialization and Legislative Needs

Coding and traceability from the first point of manufacture to pallet level within a validated pharmaceutical environment.

Control is an integrated software system that manages the whole packing and coding process - from the point at which packaging components and materials enter the production line until the finished packaged product leaves the manufacturing plant at case or pallet level. This will include identification of product entering the production line, the allocation, generation and management of the serial number or unique identifier and the application and authentication of the individual code.



Control systems are in production on fully validated packaging lines running 24/7 at leading pharmaceutical companies. Control meets all GAMP4, 21CFR Part 11, ISO, and other compliance and regulatory requirements.

The integrated solution offering (beyond software)

- Fully supported installation (automation engineering)
- Field devices (printers, vision systems, etc)
- Consultancy services:
 - Full validation of systems
 - GAMP4-compliant documentation (user requirement specification, functional design specification etc)
- Maintenance support and training



Advantages of Control

1. Hardware technology agnostic

Control is hardware agnostic and already connected to over 80 different devices (inkjet and laser printers, scanners, RFID, PLC's, vision systems and others) and consequently can be retrofitted onto existing lines. This allows you to extend the life of existing equipment by integrating it into the Control system.

2. Seamless integration with existing software systems

Control interfaces with all major branded and proprietary enterprise (ERP), manufacturing (MES) and warehousing (WMS) systems.

3. Compliance to Regulation

Working to the highest global and industry standards we will ensure that all actions within the production environment are compliant to the required current and if known, future standards. These include global standards such as ISO, GAMP4, 21 CFR Part 11 as well as industry standards such as FDA, EFPIA, CIP (France), Turkey, IFAH or organisation mandates such as Wal-Mart or DoD.

4. Flexible Client-Server Architecture

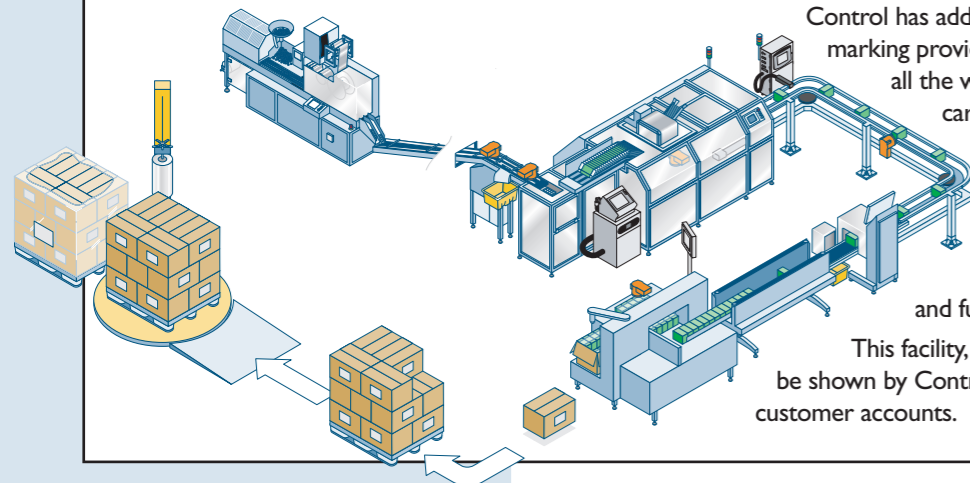
Control is a client-server application with local decision-making held at the client and with enterprise business logic held at the server level. This allows multiple site servers to be collated to an enterprise server thus maintaining central control while providing the benefits of speed with a distributed system.

This server-based approach has the added benefit that no redundant data is held on the clients (line controllers) and as a result line client failure management and maintenance is time and cost efficient.



Concept made into reality - The Centre of Excellence

To demonstrate the Control software system, a Centre of Excellence has now been established in Holland which showcases true Track and Trace technology on a fully operational pharmaceutical contract packing and production line.



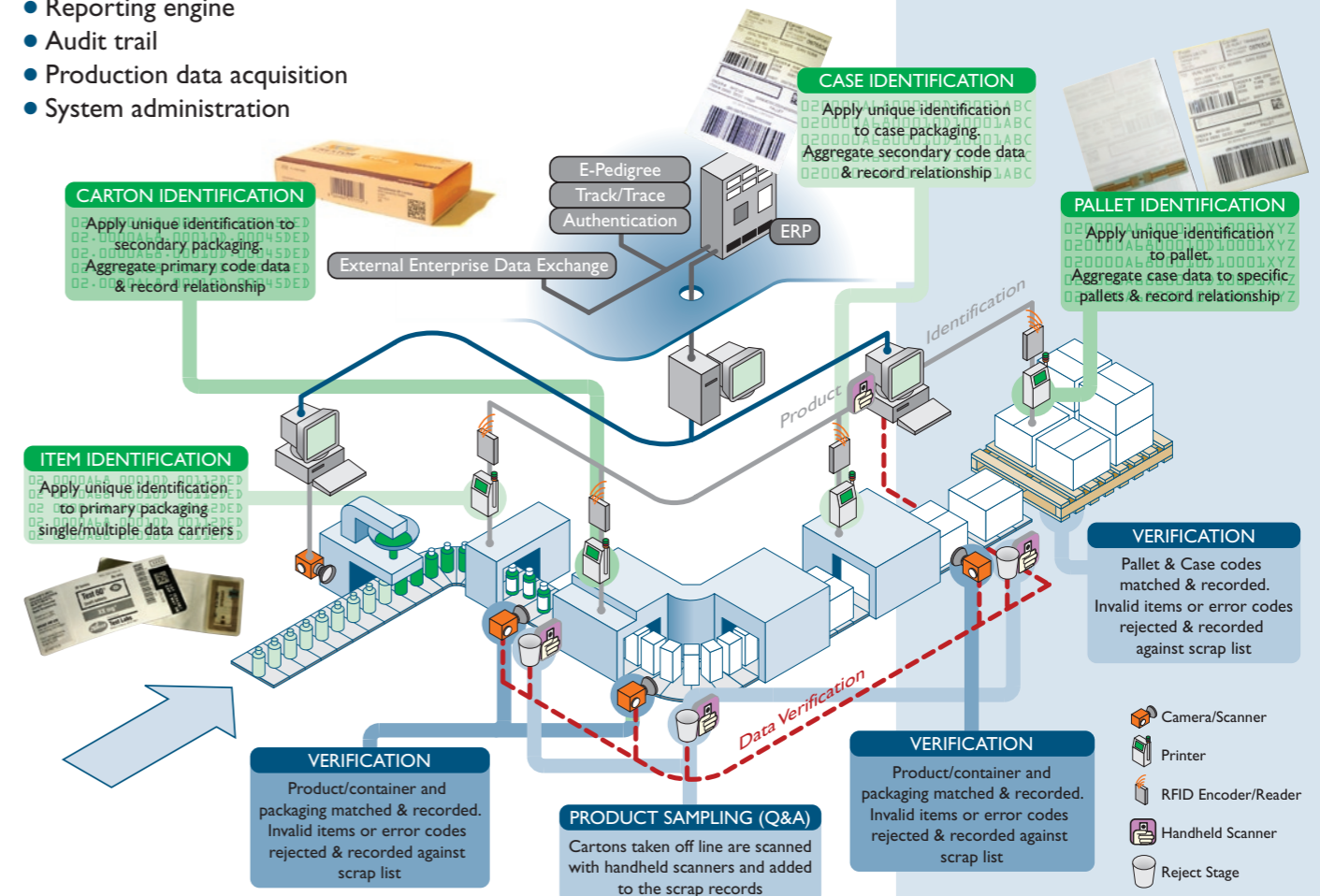
Control has added a completely new level of coding and marking providing mass serialisation and aggregation all the way from blister strip and pouch level to carton, case and pallet. Codes are produced and verified at existing manufacturing speeds and the system has been retrofitted onto the existing production line. Control followed the GAMP4 Lifecycle Management model to develop, deliver and fully validate the Centre of Excellence.

This facility, which is unique in the marketplace, will be shown by Control to a select number of key global customer accounts.

Functionality

Control provides functionality in a series of modules which include:

- Serial Number / Unique Identifier generation, allocation & management, including commissioning / decommissioning and reconciliation
- Aggregation at varying levels of packaging hierarchy (blister pouch, blister strip, item level (carton/bottle), bundle or multi-pack, case, pallet, container, load, truck)
- Image / Label / Marking creation
- Management of partially filled containers at every aggregation level
- Electronic Batch Report
- Exception management
- Reporting engine
- Audit trail
- Production data acquisition
- System administration



Product Philosophy

- Core system functionality and critical processes centralised on the server
- Java-based system thus operating system independent (configurable to Windows, HP and all proprietary platforms)
- Solely global, open standards (HTML, TCP/IP etc)
- Modular system design
- Configurable to meet individual customer requirements
- 100% acquisition of all production relevant data
- 100% coverage of all manufacturing stages
- Simple, secure operation